

Spring Newsletter

PLACE ARCHITECTURE

East Main Street
Bozeman, Montana

Things that are CLEAR

PLACE Architecture brings you important and meaningful information about the world of design and living clear. This second newsletter is focused on clarity. We hope you enjoy the following information and educational data that you can use in everyday life.

TRANSLUCENT CONCRETE

In today's world where technology is rapidly changing, experiments with building materials are keeping pace. In 2004, Hungarian Architect Aron Losonczi introduced the world to translucent concrete. What was once a cold, dark surface has now been transformed into a light, translucent surface in which silhouettes of objects can be seen. Translucent concrete allegedly has the compressive strength of conventional concrete, which makes its application virtually endless.

Translucent concrete is composed of thousands of optical glass fibers arranged in a matrix that run parallel to each other. According to Losonczi, "Shadows on the lighter side will appear with sharp outlines on the darker one. This special effect creates the general impression that the thickness and weight of a concrete wall will disappear."

Losonczi is an Architect from Csongrad, Hungary who developed the idea while studying at the Royal University College of Fine Arts in Stockholm, Sweden. With his recent recognition, he has formed a company called LitraCon, which manufactures prefabricated blocks and lighting for sale.

To read more about translucent concrete and related products, visit LitraCon at www.litracon.hu



WINDOWS

Wooden windows have been around for a long time. But, they are not your only choice of windows these days. Below are a couple of informational tidbits that might help you decide what window will be best for you. When searching for windows, find out what kind of windows are good for your climate. Also look at the locks, cranks and lifts.

FOR MORE INFORMATION:

www.milgard.com

www.weathershield.com

Wood

- *Most visually appealing
- *Excellent insulator
- *Requires regular maintenance
- *If not properly protected, wood frames may warp, crack or stick

Aluminum

- *Aluminum is 3 times stronger than vinyl and 43 times stronger than wood
- *Will not warp, crack or stick
- *Good conductor of heat
- *Poor insulator

Vinyl

- *Most affordable
- *Little maintenance
- *Uniform color
- *Hollow or foam filled insulation, not much difference in energy performance
- *Can soften, warp, twist, and bow

Aluminum Clad

- *2 parts wood 1 part aluminum
- *Prevents common problems with wood

Vinyl Clad

- *Little maintenance
- *Expansive but viable option
- *Long lasting weather protection

Fiberglass

- *More expensive than wood or vinyl
- *Resists cracking, warping and rotting
- *Will expand and contract as a unit preventing rotting, and warping stress
- *Maintenance free



Marvin Aluminum Clad



Milgard Vinyl



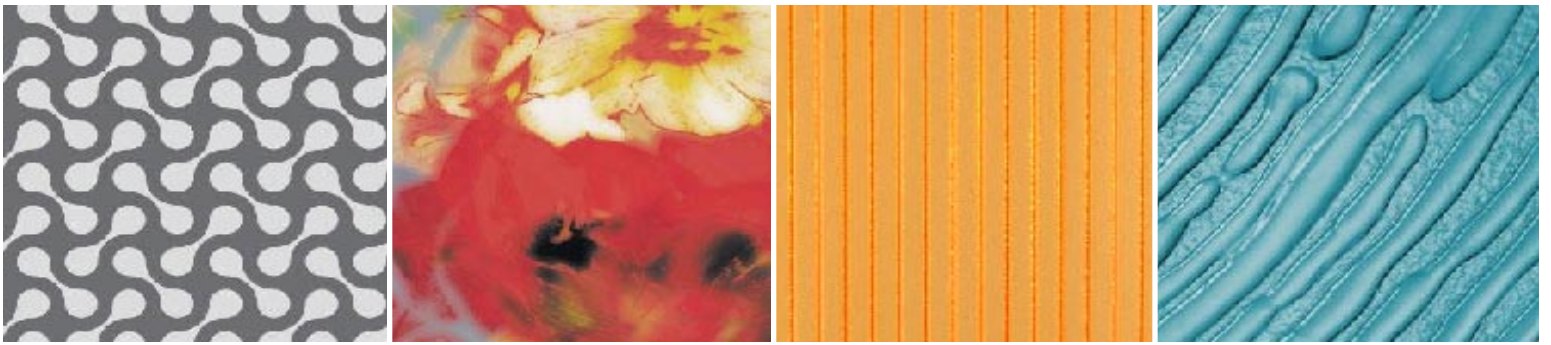
Weather Shield Vinyl Clad Wood



Aluminum windows are used on this house in Pine Creek, MT. Read the article in the Spring 2006 Big Sky Journal.



Weather Shield Aluminum Clad
Wood



3form

3form is the leading manufacturer of award-winning, eco-friendly materials and solutions for the Architecture + Design industry. Their innovative 3form Varia system uses ecoresin to encapsulate textiles, organic materials, textures and custom images to translucent resin panels that can be transformed into walls, dividers, doors and other architectural solutions.

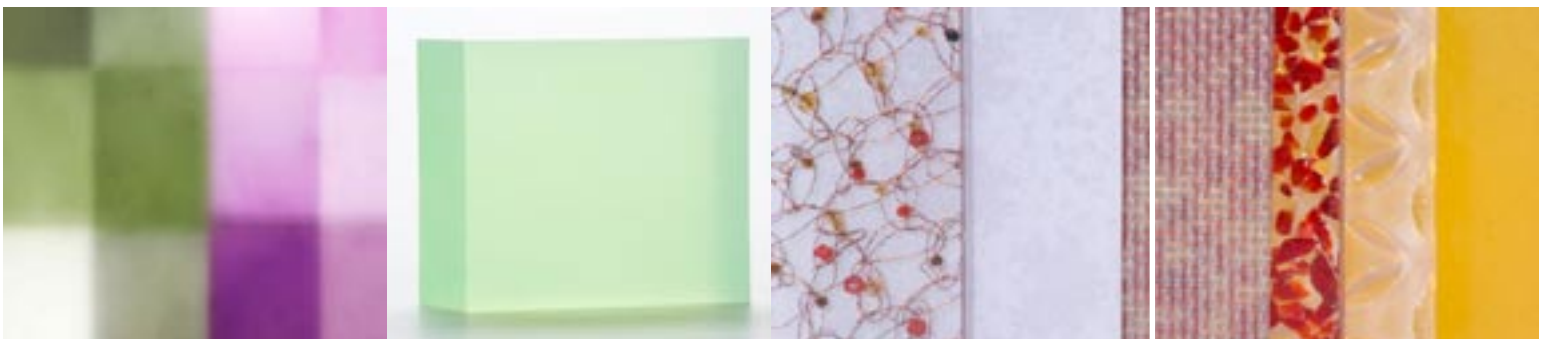
Materials for the mind and the eye. From the lightness of translucency to the fascination of interlayers, 3form materials engage one's senses—and one's sensibility thanks to its eco-consciousness. See the incredible variety 3form can add to your projects with their stunning array of materials.

The 3form Architectural division was founded in 2004 to respond to the needs of the A+D market. Since that time, they have worked closely with major architectural players to research and develop new materials and processes for building, allowing architects and designers to have immense control over their ideas.

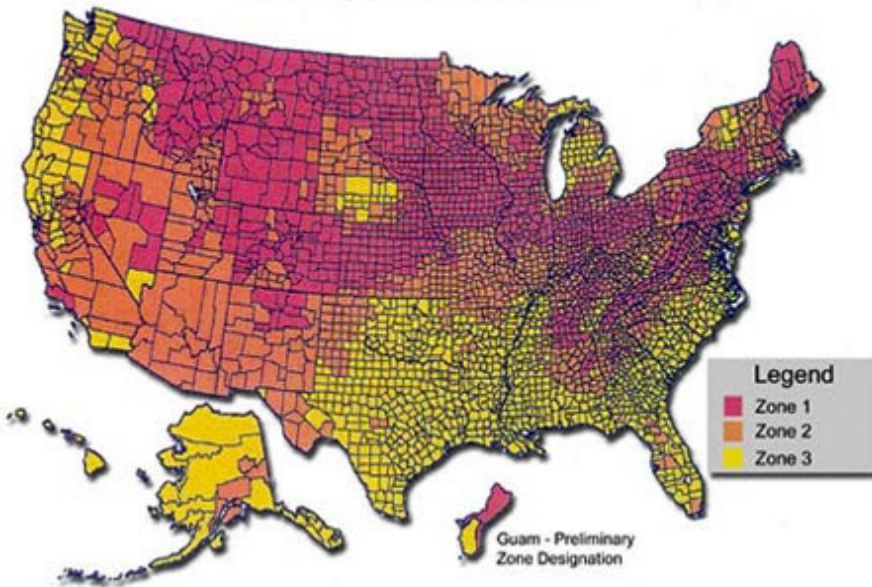
Today, setting standards in not only innovation but environmental accountability has become an expected practice at 3form. Winning countless design awards and having been embraced by architecture's multifaceted academic, commercial and editorial circles, 3form continues to prove its leadership.

Using 3form's "You Create" page, you can create a virtual sample from beginning to end, specifying finish, texture, interlayer, and color. You can even email your creation to your sales rep, client, contractor or whoever else you may wish to share it with. When you are finished, you can even order a real sample of your creation for \$15.

contact info:
800 726 0126
www.3-form.com



EPA Map of Radon Zones



- Zone 1 counties have a predicted average indoor radon screening level greater than 4 pCi/L (pico curies per liter) (red zones)
- Zone 2 counties have a predicted average indoor radon screening level between 2 and 4 pCi/L (orange zones)
- Zone 3 counties have a predicted average indoor radon screening level less than 2 pCi/L (yellow zones)

The U.S. Surgeon General, Richard Carmona, Issues National Health Advisory on Radon

(January 13, 2005)

The Surgeon General of the United States has issued a Health Advisory warning Americans about the health risk from exposure to radon in indoor air. The Nation's Chief Physician urged Americans to test their homes to find out how much radon they might be breathing. Dr. Carmona also stressed the need to remedy the problem as soon as possible when the radon level is 4 pCi/L or more. Dr. Carmona noted that more than 20,000 Americans die of radon-related lung cancer each year.

Who can test or fix your home for radon?

State contact information:

MT Department of Environmental Quality - www.deq.state.mt.us/index.asp
Occupational & Radiological Health Quality
P.O. Box 20091
Helena, MT 59620-0301

For additional radon questions or concerns:
<http://www.epa.gov/radon/radonqa1.html>

AIR QUALITY INDEX

www.epa.gov

